

# Four Legged Lake Watershed Project

Red Lake Watershed District

July 12, 2016 Meeting; 4:00–6:00 p.m.

## Welcome!

The purpose of this meeting is to:

- Build public awareness and understanding of the project.
- Meet the project team.
- Ask questions.
- Provide opportunity for public input.



## Project Goals

### Historical Context

- Four connected basins with an upstream drainage area of 9 square miles.
- The basins of Four Legged Lake are a part of Judicial Ditch #5.

### Project Purpose

The purpose of this project is to allow adaptive water level management of Four Legged Lake throughout the year.

### Today's Needs

- In the late 1990's, the west outlet culvert was raised without approval of the ditch authority, resulting in a 3 foot rise in water levels.
- Flooding of private lands and adjacent roadways has persisted since the outlet raise.

### Goals for Tomorrow

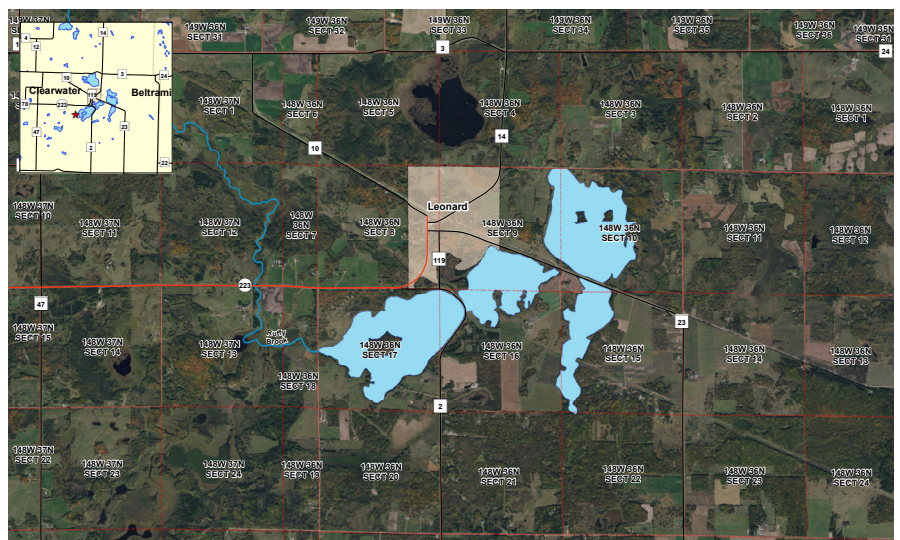
- Reduce Flood Damage
- Restore Habitat
- Improve Water Quality

## Major Considerations in the Human & Natural Environment

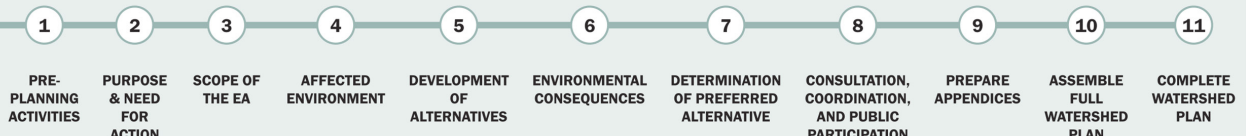
- Human health & safety
- Erosion & sedimentation
- Archeological & historical resources
- Fish & wildlife resources
- Stream lakes & wetlands
- Water quality
- Floodwater property damage
- Economic & social
- Threatened & endangered species
- Downstream peak flow rates and flow volumes
- Transportation
- Prime farmlands
- Land use & management

## Project Location

Four Legged Lake is located in northwestern Minnesota within the Clearwater River subwatershed of the Red Lake Watershed District. The lake is made up of four separate basins which are separated by roadway embankments. Two basins make up what is referred to as West Four Legged Lake, and two basins make up what is referred to as East Four Legged Lake. There is a culvert through each roadway embankment to allow the basins to be hydraulically connected. The lake is located along what was originally Judicial Ditch #5, which was built in 1921.

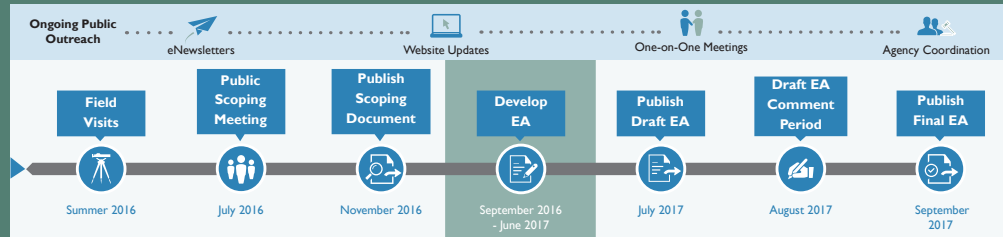


## NRCS Planning Process

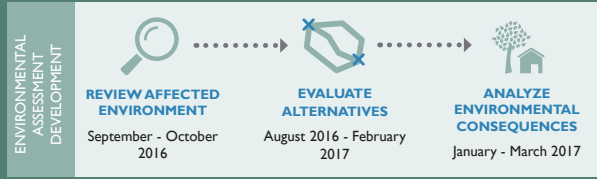




# Project Schedule

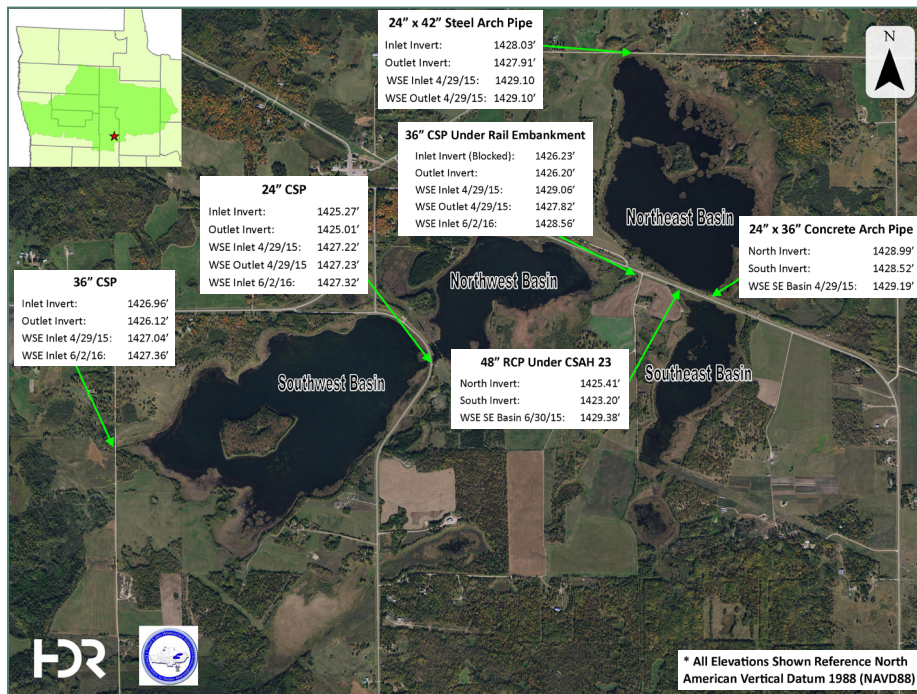
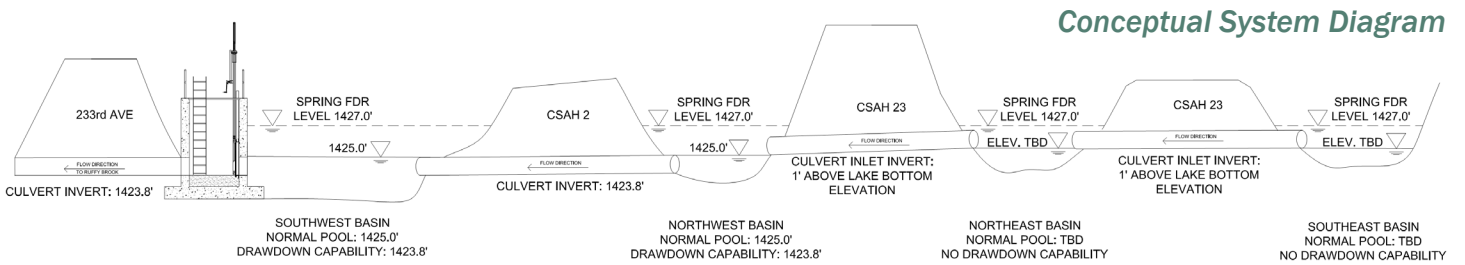


\*All dates are tentative and subject to change



## Modifications

The primary alternative is the construction of a new structure at the outlet of the lake system.



## How to Stay Informed and Provide Input

You can stay informed about progress online by visiting the Project Page at: <http://www.redlakewatershed.org/>

Complete a comment form today!

Contact Myron Jesme, District Administrator for more information.

218.681.5800

Red Lake Watershed District  
1000 Pennington Avenue South  
Thief River Falls, MN 56701